



THE SIREN

Ebola Virus Disease (EVD) -- the Latest

Overview from the CDC

The 2014 Ebola epidemic is the largest in history, affecting [multiple countries](#) in West Africa. There were a small number of cases reported in Nigeria and a single case reported in Senegal; however, these cases are considered to be contained, with no further spread in these countries.

Two imported cases, including one death, and two locally acquired cases in healthcare workers have been [reported in the United States](#). CDC and partners are taking precautions to prevent the further spread of Ebola within the United States. CDC is working with other U.S. government agencies, the World Health Organization (WHO), and other domestic and international partners and has activated its Emergency Operations Center to help coordinate technical assistance and control activities with partners. CDC has also deployed teams of public health experts to West Africa and will continue to send experts to the affected countries.

The CDC Ebola Notification document is posted in the Member's area of the NCAC website. Other related documents will be found there as well.

The **Greater New York Hospital Association** has put together a comprehensive set of Ebola Training videos. Because an Ebola patient could show up at any hospital at all, every hospital must be ready to receive and treat an Ebola patient AND (just as important) be ready to protect all healthcare workers. This extends to all prehospital caregivers.

Find the videos here, including a full Personal Protective Equipment (PPE) Training Demonstration video:

<http://www.gnyha.org/ebolatraining>

The NY State Department of Health has also recently published Commissioner's Orders for all healthcare entities. The portion relevant to ambulance services will be found later in this issue, along with a Pre-Hospital Screening Guide. Other related documents will be posted in the Members' Area of the NCAC website. They have also established a web page for disseminating Ebola-related information to healthcare workers. Please consult it frequently:

<http://www.health.ny.gov/diseases/communicable/ebola/>

Case Counts from the CDC*

As of November 24, 2014
(Updated November 24, 2014)

Total Cases: 15351
Laboratory-Confirmed Cases: 9596
Total Deaths: 5459

*Case counts updated in conjunction with the World Health Organization updates and are based on information reported by the Ministries of Health.

INSIDE THE SIREN

<i>Snowflake 5K</i>	2
<i>Free flu vaccine</i>	3
<i>PEARS Course</i>	3
<i>Kaptain's Corner</i>	4
<i>Training notes</i>	4
<i>Training calendar</i>	5
<i>Homeland security</i>	
<i>Ebola guidance</i>	6
<i>Pre-hospital Ebola</i>	
<i>screening</i>	7
<i>Merchant discounts</i>	8



Nyack Community Ambulance Corps
New 2014
Administration and Officers

President & Safety Officer -

William McDowell

Vice President - Administration -

Steve Borton

Vice President - Operations (Captain) -

Paul Morer

Secretary - Susan Hellauer

Board Members at Large -

Jeremy Griffel

Deirdre Denehy,

Pamela Brown-Thompson

Training Officer- Willie White

Lieutenants -

1st: Ivan Guerra

2nd: Jeremy Griffel

3rd: Willie White

Legal Counsel - Duncan Lee, esq.

Medical Director - Dr. Mark Papish

Noteworthy

Congratulations to **Basil Aaron**, who is now cleared to work as an EMT and crew chief! Well done Basil!

Welcome New Members:

Drew Gazza Gabrielle Phillips Phil Sager

2015 Election Slate as nominated at the 11/13/14 General Membership Meeting

President: William McDowell

Vice President: Steve Borton

Captain: Paul Morer

Board Member at Large:

Pamela Brown-Thompson

Training Officer: Willie White

Lieutenants: Gerry Dupiton, Jeremy Griffel (who would require a residency waiver from the Board).

All candidates are running unopposed. Any open positions will be filled by the Board of Directors in January.

-- Sue Hellauer, secretary

Officer Contact Information

Rank	Name	Radio	Cell #	Email	Duties
Captain	Paul Morer	1	917-817-1867	Paul.Morer@NyackEMS.org	
Lieutenant	Ivan Guerra	2	845 304 0246	Ivan.Guerra@NyackEMS.org	
Lieutenant	Jeremy Griffel	3	845 558 7103	jeremy.griffel@nyackEMS.org	
Lieutenant	Willie White	4	845-893-0084	willie.white@nyackEMS.org	

The Nyack Ambulance SNOWFLAKE 5K RETURNS! BETTER THAN EVER!

Sunday December 28, 2014 -- Start time 10:00 am

Kids' Race -- Frosty the Snowman -- Family Fun!

Sign up at: <https://runsignup.com/Race/NY/Nyack/>

[Snowflake5KRunWalkNyackCommunityAmbulanceCorps?ordering](https://runsignup.com/Race/NY/Nyack/Snowflake5KRunWalkNyackCommunityAmbulanceCorps?ordering)

Volunteers needed: email VP Steve Borton



From Lieut. Jeremy Griffel

Much as you would guard your driver's license, credit cards, and other personal belongings, please safeguard your Nyack Ambulance ID card.

Recently there has been a spike in the number of members and paid staff reporting lost ID Cards. Understand that losing an EMS ID has the potential to be a very big issue both when it comes to our building security as well as the neighbors we serve should said ID card get into the wrong hands.

While it is required that you wear and display the ID card while on duty, it is even more important to ensure you do not lose the ID at any time.

If you have any questions feel free to contact me.

Jeremy E. Griffel, EMT-P
Lieutenant
Nyack Community Ambulance Corps

Flu Vaccine at Nyack Hospital

Free influenza vaccinations are being administered in the main pharmacy, by certified pharmacist immunizers.

This is for all Employees, Medical Staff, Volunteers, Contractors, Emergencies Responders (Police, EMS, Fire).

For Flu shots on the weekend, please call the main Pharmacy at Ext. 2607 or 2608 to ensure a Certified Pharmacist is available.

Benoni K. Commodore R.Ph.
Interim Director of Pharmacy
Nyack Hospital
160 North Midland Avenue
Nyack, NY 10960
Telephone: 845-348-2605
Fax: 845-348-2938

.....

To: All Members, Youth Corps and Paid Staff
 From: TO Willie White
 Re: **AHA PEARS CLASS**
 Date: Tuesday, November 25, 2014

To effectively treat your Pediatric/Infant patients, the following class will be offered in January-Mid February 2015. Pediatric CME and 2 year AHA PEARS card will be given upon completion.

The American Heart Association's PEARS Course has been updated to reflect science in the 2010 American Heart Association Guidelines for Cardiopulmonary Resuscitation and Emergency Cardiovascular Care (2010 AHA Guidelines for CPR & ECC).

This classroom, video-based, Instructor-led course helps healthcare providers develop the knowledge and skills needed for emergency evaluation and initial stabilization of seriously ill infants and children. PEARS teaches students how to recognize respiratory distress, shock and cardiac arrest and provide appropriate lifesaving interventions within the initial minutes of response until the child is transferred to an advanced life support provider. It also emphasizes the resuscitation team concept.

The goal of the PEARS Course is to improve the quality of care provided to seriously ill or injured infants and children, resulting in improved outcomes. Once a child is in cardiac arrest, even with optimal resuscitation efforts, outcome is generally poor. According to the 2010 AHA Guidelines for CPR and ECC, only 4% to 13% of children who have a cardiac arrest in the out-of-hospital setting survive to hospital discharge. The outcome is somewhat better for children in the in-hospital setting: about 27% survive to hospital discharge.

The only course-prerequisite for class is your AHA CPR Card. Course time is 6.5 to 7 hours with breaks and lunch included. Brandon Smith is a Paramedic CIC Instructor will be the lead instructor for this class. If you are interested, please email me willie.white@nyackems.org so that I can order material. There is no fee associated to our members etc for this class.

.....



KAPTAIN'S KORNER

CAPT. PAUL MORER, NREMT-B

Uniforms

This is a reminder for all members, volunteer and paid to be in proper uniform at all times.

For paid members, this means a white uniform shirt.
It DOES NOT mean sweatshirts, job shirts, or the like.

Now that the cold weather is finally arriving, you must also be in a Nyack Ambulance issued jacket. Not anything generic.

If you are in need of a jacket, please let Lt. White know.

Rig Reminder

As a reminder, you MUST use a spotter when backing the truck into the bay.

Also, the driver is to be the only one in the truck while backing into the bay.

Any trainees or youth corps must exit the truck before you back it up.



TRAINING NOTES

Willie R. White

Training Officer

In attempt to comply with the Dept of Health required **training for Ebola**, Operations and I are combining equipment and training into sessions to show the membership the Do's and Don'ts of handling the potential contaminated patient. Our SOPS will be updated with Hospital Destinations etc soon. To view our current SOPS or any other information regarding our corps visit www.nyackems.org and register.

Cancellations of Medics:

From a Training Officer's opinion, please make sure u fully assess your patient BEFORE canceling the medics. Your assessment should entail-complete vital signs, history and why the ambulance was called. Remember, you may think it's silly an ambulance was called for a stub toe, but you need to play detective to find out why he stubbed his toe. Cardiac issue? Syncope?

As always, please remain safe and alert during your shift.

ww

Youth Corps

There are currently 9 youth corps in the membership and they have been riding:

- Aleah Vir
- Alyson Siragusa
- India June
- Ivy Ambler-School
- Jenae Allivear
- Lily Gold-Parker
- Radene Mitchell

All of them have been familiarized with the ambulances and equipment. We have one scheduled monthly training session (4th Sunday) 2p-3-30pm. Topics vary; we just reviewed **equipment used in cardiac arrest**.

Feel free to stop by and lend a hand.

The Siren is the quarterly publication of Nyack Community Ambulance Corps
251 N. Midland Avenue, Nyack, NY 10960
Susan Hellauer, EMT-B, editor (Susan.Hellauer@NyackEMS.org)



CME and training opportunities in the area

Following are local training and CME opportunities. For more complete information, changes and additions, check the training board at the NCAC building frequently for postings of CMEs and required training for corps members.

You can also log on to www.hvremSCO.org and click on CME for last minute changes and additions to area training. Also consult www.wremSCO.org/ for Westchester area CMEs, training classes and conference notices.

If you know of any training opportunities that are not listed here, or on the training board, please bring them to the attention of training officer [Willie White](#).



NOTE: CHECK THE TRAINING BOARD AT THE BUILDING FREQUENTLY FOR NEW TRAINING CLASSES.

Date	Day	Time	Location	Topic
11-03-2014	Monday	1930	BGVAC	Shock Trauma
11-06-2014	Thursday	1930	GLVAC	Topic pending
11-10-2014	Monday	1700	GSH @Mahwah Sheraton	GSH Trauma Symposium – Crossroads Sheraton
11-11-2014	Tuesday	1930	Pearl River	EMS / Operations / Rehab
11-13-2014	Thursday	1930	SOAC	EMS / Operations / Rehab / Rad 57 Please note date change from Thursday, 11-27-2014
11-17-2014	Monday	2000	Faist	Fracture Mgmt
11-18-2014	Tuesday	2000	Piermont	Psych / Toxicology / Endocrine
11-25-2014	Tuesday	1930	Nyack	Cardiac Emergencies / LVADS
Date	Day	Time	Location	Topic
12-04-2014	Thursday	1930	Warwick	Topic pending
12-08-2014	Monday	1900	GSH	End of Year Call Audit
12-09-2014	Tuesday	1930	Pearl River	Cardiac Emergencies / LVADS
12-11-2014	Thursday	1930	SOAC	Spinal Immob. Please note date change from 12-25
12-15-2014	Monday	2000	Faist	EMS / Operations / Rehab / Rad 57
12-16-2014	Tuesday	1930	Piermont	Burns / Shock
12-30-2014	Tuesday	1930	Nyack	EMS / Operations / Rehab / Rad 57

DID YOU KNOW?

that the HVREMSCO TRAINING PAGE is where you can find all upcoming EMT original and refresher courses AND CME classes, along with contact information, available in the entire Hudson Valley Region, including Rockland County (excludes Westchester).

Go to the [HVREMSCO TRAINING CALENDAR](#)

Nyack Hospital **TRAUMA CONFERENCE 2014**



Saturday & Sunday, December 13 & 14, 2014

Location:
Krutz Auditorium, Nyack Hospital

Details to follow!

Contact:
Jennifer Pastiglione
pastiglionej@nyackhospital.org
or
Gabby Hernandez
hernandezg@nyackhospital.org

AND DID YOU KNOW?

that there are numerous training opportunities just a short ride away in Westchester County, many of them at Westchester Medical Center in Valhalla.

Go to <http://emergencyservices.westchestergov.com> and click on [Training Classes](#).

Or click on [About Us/Email Sign-Up](#) to receive notices of all training classes.



[Excerpt from Emergency Management and Response Information Sharing and Analysis Center (EMR-ISAC), INFOGRAM 14-44, October 30 2014]

Updated Ebola Guidance from the IAB, CDC, HHS

(Sources: [CDC](#), [HHS](#), and [IAB](#))

The Centers for Disease Control and Prevention (CDC) and the InterAgency Board (IAB) recently published or updated four procedural documents aimed at keeping first responders safe from Ebola exposure during the course of their duties.

The IAB published “[Recommendations on Selection and Use of Personal Protective Equipment \(PPE\) for First Responders against Ebola Exposure Hazards](#)” (https://iab.gov/Uploads/IAB%20Ebola%20PPE%20Recommendations_10%2024%2014.pdf - PDF, 623 Kb). The selection and use of specific PPE is based upon the risk of exposure. The document provides a quick table to help determine that risk. It also discusses PPE decontamination, donning and doffing, and provides a detailed description of different PPE.

The Department of Health and Human Services (HHS) created an [Ebola presentation template](http://www.phe.gov/Preparedness/responders/ebola/Documents/ebola-overview-template.pdf) (<http://www.phe.gov/Preparedness/responders/ebola/Documents/ebola-overview-template.pdf> - PDF, 1.5 Mb) for organizations and public health departments interested in giving a slide presentation on Ebola to their employees or staff. The 35 slides can be customized with departmental or agency names and logos.

“[Guidance on Personal Protective Equipment to be Used by Healthcare Workers during Management of Patients with Ebola Virus Disease in U.S. Hospitals, Including Procedures for Putting on \(Donning\) and Removing \(Doffing\)](http://www.cdc.gov/vhf/ebola/hcp/procedures-for-ppe.html),” (<http://www.cdc.gov/vhf/ebola/hcp/procedures-for-ppe.html>) by the CDC, emphasizes the proper use of PPE by healthcare workers, especially removal, which is complicated and the most risky part of the process.

The CDC has also again revised the “[Interim Guidance for Emergency Medical Services \(EMS\) Systems and 9-1-1 Public Safety Answering Points \(PSAPs\) for Management of Patients with Known or Suspected Ebola Virus Disease in the United States](http://www.cdc.gov/vhf/ebola/hcp/interim-guidance-emergency-medical-services-systems-911-public-safety-answering-points-management-patients-known-suspected-united-states.html)” (<http://www.cdc.gov/vhf/ebola/hcp/interim-guidance-emergency-medical-services-systems-911-public-safety-answering-points-management-patients-known-suspected-united-states.html>). The updates reflect “lessons learned from the recent experiences caring for patients with Ebola” in national healthcare settings.

Lastly, this week the CDC released guidance on monitoring people traveling back to the United States from areas of the world stricken with Ebola and who may have been exposed. “[Monitoring Symptoms and Controlling Movement to Stop Spread of Ebola](http://www.cdc.gov/media/releases/2014/fs1027-monitoring-symptoms-controlling-movement.html)” (<http://www.cdc.gov/media/releases/2014/fs1027-monitoring-symptoms-controlling-movement.html>) defines the four risk levels based upon the degree of exposure. The guidance recommends stricter actions, active monitoring on the part of state and local public health agencies instead of relying on individuals to self-monitor, and detailed guidance on monitoring health care workers.

The INFOGRAM is distributed weekly to provide members of the Emergency Services Sector with information concerning the protection of their critical infrastructures. For further information, contact the Emergency Management and Response- Information Sharing and Analysis Center (EMR-ISAC) at (301) 447-1325 or by e-mail at emr-isac@dhs.gov.

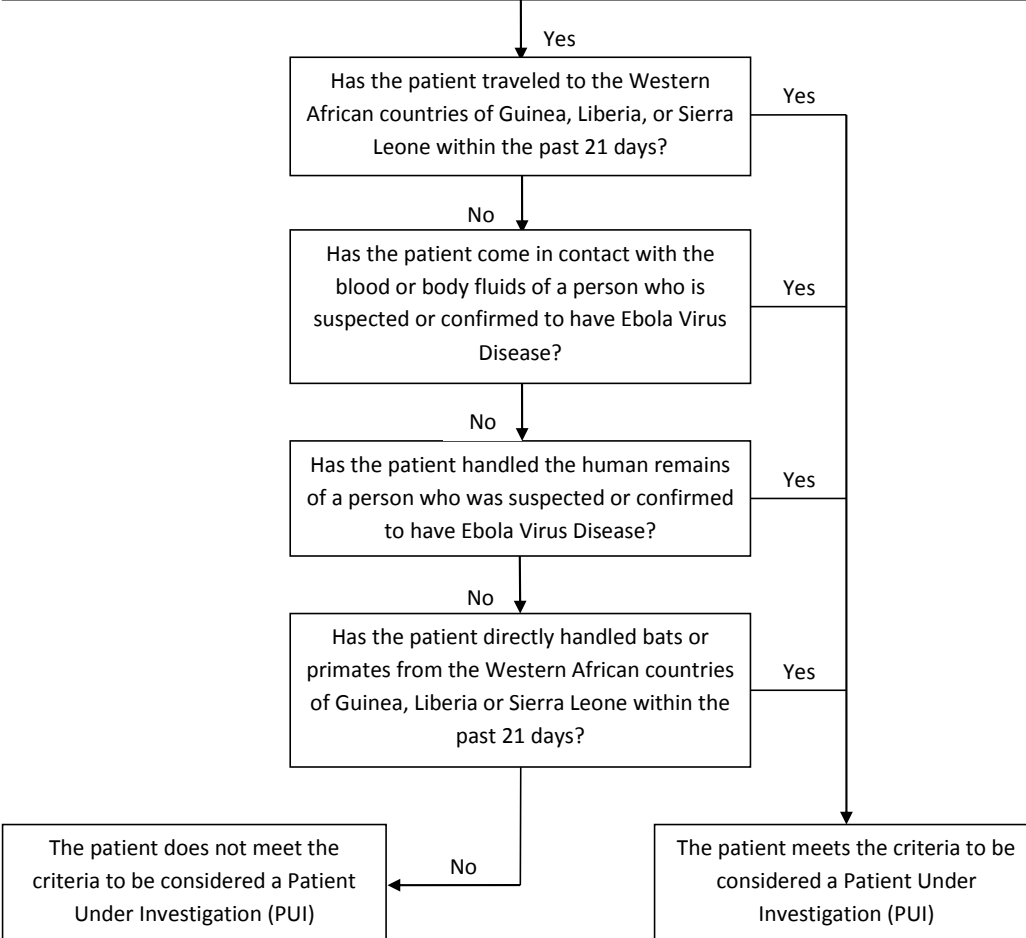
<http://www.usfa.fema.gov/fireservice/subjects/emr-isac/index.shtm>



Pre-Hospital Screening for Ebola Virus Disease

Information Current with CDC and NYSDOH guidance as of October 22, 2014

Patient presents with a fever greater than 100.4° F and/or symptoms such as severe headache, muscle pain, vomiting, diarrhea, abdominal pain, or unexplained hemorrhage



1. The patient should be isolated and STANDARD, CONTACT, and DROPLET precautions followed during further assessment, treatment, and transport.
2. IMMEDIATELY report suspected Ebola case to receiving facility.
3. **If the patient is not transported (refusal, pronouncement, etc.):**
Contact the County Dispatch Center and inform them of the positive screening so the County Health Department can be contacted. Be prepared to provide the patient's name and contact information, EMS service name, PCR run number, EMS practitioner's name and contact information.



Members Discounts!

We are compiling a list of local merchants who offer discounts to NCAC members. Merchants currently offering discounts are listed here, and on our website in the "Members" area.

Please ask the local merchants whom you patronize if they would be willing to offer a discount to their local EMS volunteers. We will list them in our newsletters, on our website, and encourage our members to do business with them.

Supporting our local merchants will also help keep Nyack (and the other river villages) from turning into chain store wastelands.

Charlie's Cleaners,
10% off dry cleaning
2 S. Highland Ave (9W)
Nyack, NY

Account Name: Nyack Community Ambulance Corps
Contact phone: 358 4824
Members be sure to put your own name on store receipt to avoid pickup mixups.

Nyack Barber Shop
69 Main Street
Nyack, NY
\$2 off haircut

Johnny Cakes
84 Main Street
Nyack, NY
10% off eat-in or carry-out orders

Pet Nutrition Center
115 Route 59
Nanuet, NY
5% off pet food and supplies

Dapper Dog
37 Route 59
Nyack, NY
5% off pet food and supplies

Temptations
80 1/2 Main Street
Nyack, NY
15% off all purchases

Turiello's
76 Main Street,
Nyack, NY
10% off eat-in or carry-out orders

Tarantella's
128 Main Street
Nyack, NY
10% off eat-in or carry-out orders

Walgreens
16 Rt 59 (corner of 9W)
Nyack, NY 10960
15% off regular items; 20% off Walgreens and photo

**See full Participating Merchant List
on the Bulletin Board
at the NCAC corps building**



SAVE THE DATE!!!



2014 EMS
SPORTS MEDICINE & TRAUMA
CONFERENCE

Is **RESCHEDULED** To:

Saturday,

February 21, 2015

Sleepy Hollow High School

Sleepy Hollow, NY



Westchester
gov.com

Robert P. Astorino
County Executive
John M. Cullen
Commissioner, Department of Emergency Services



TRAINING ANNOUNCEMENT

9 October 2014

Announcement#: 15-03

Bath Salts: The Newest Threat to Responders **&** **Chemical Suicide Information for the First Responder**

January 22nd from 18:30 to 22:30 hours

Description: This course is intended to provide all levels of first responders with the basic knowledge required to recognize a potential bath salts incidents, how to safely approach and handle the effected individuals, proper personal safety precautions, and scene management.

Chemical suicide, or detergent suicide, is becoming a large problem in the United States. This course is intended to provide all levels of first responders with the basic knowledge required to recognize a potential chemical suicide, how to safely approach the incident, proper personal safety precautions, and scene management.

Target audience: All First Responder Personnel*

****EMS Providers:** This course may be applied toward General Elective CME hours under the NY State DOH EMS Continuing Education Recertification Program.*

Prerequisites: None

Registration: Pre-registration is mandatory. **Walk-ins are not permitted.** Register through your chief or training officer. Chief's and training officer's can register their personnel at; <http://emergencyservices.westchestergov.com/>. **Other Emergency Services personnel, to register please e-mail FireTraining@westchestergov.com.** Class size is limited to forty (40) students for the daytime class and Sixty (60) students for the evening class.

Venue: Westchester County DES Training Center, 4 Dana Rd. – Grasslands Campus, Valhalla, New York. All students are to park in the lot adjacent to the **Support Services Building** located at 35 Walker Road. (There is a stairway linking the parking lot directly to the training campus.) For questions or concerns regarding weather or course cancellation call (914) 231 – 1615.

Check out our Website at <http://emergencyservices.westchestergov.com/> for the most current information on training